



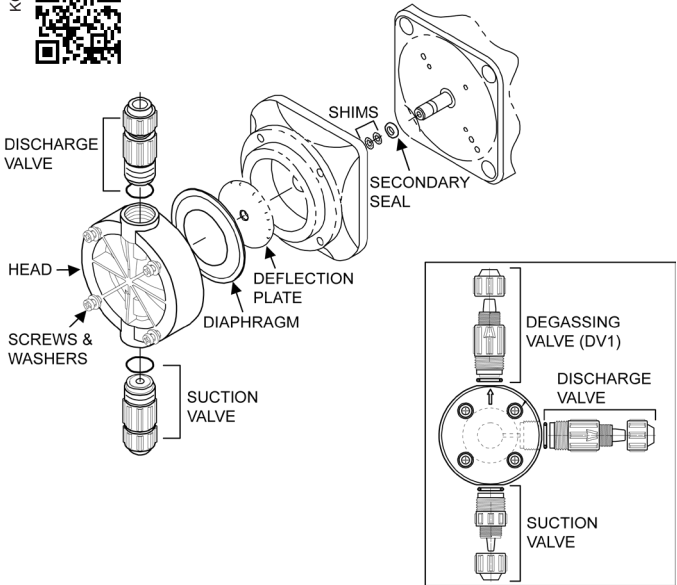
PULSAtron Electronic Metering Pump

KOPkit

Keep On Pumping kit

KOPkit CONTENTS	QTY
DEGASSING VALVE ASSEMBLY (Degas Models)	1
DISCHARGE VALVE ASSEMBLY	1
PUMP HEAD	1
PUMP HEAD SCREWS & WASHERS *	4
SUCTION VALVE ASSEMBLY	1
DIAPHRAGM	1
DEFLECTION PLATE	1
SHIMS	2
SECONDARY SEAL	1

*H8 MODELS HAVE 6 - SCREWS/WASHERS



KOPkit Instruction

Always adhere to local, state and national codes. Also be sure to use appropriate Personal protective equipment, such as gloves and eye protection to keep you safe in the event of contact with any chemical.

1. Flush pump head and valve assemblies out by running water or other suitable neutralizing solution through pump. Wash outside of pump down if chemical dripped on pump.
2. Release system pressure
3. Set stroke length of pump to 50% and unplug pump.
4. Disconnect tubing or piping from the pump. Remove the four pump head screws and then remove the pump head assembly.
5. Remove the diaphragm by grasping it at the outer edges and turning it counter-clockwise until it unscrews from the electronic power module (EPM). Note: The number of diaphragm shims which are behind the diaphragm. Shim quantity can be from 0 to 2.

6. Pull adapter off and remove the secondary seal.
7. Install the new secondary seal onto the shaft and add a general purpose lubricant to the shaft.
8. Replace the adapter with weep hole pointing down.
9. Slide the diaphragm deflection plate onto the back of the diaphragm stud, radius side towards the diaphragm.
10. Next slide the number of shims from step #5 onto the diaphragm threaded stud.
11. Apply general purpose lubricant to areas of the diaphragm that contact the deflection plate or radius on the adaptor.
12. Screw the diaphragm into the EPM unit. Turn diaphragm clockwise until deflection plate and shims are tight against solenoid shaft, and diaphragm stops turning. If there is a gap between the adaptor and diaphragm, repeat the procedure removing one shim each time until the diaphragm just touches the adapter or is slightly recessed.
13. Place the pump head onto the adaptor with valve flow arrows pointing up and install washers and screws. Tighten pump head screws in a criss cross pattern until snug and pump head pulls up against adaptor.
14. Install Suction and Discharge valves (Confirm O-Rings are attached to the valves) with stamped letters reading from top to bottom, and the arrow pointing in the direction of flow. Hand-tighten only, do not use wrenches or pliers (Degas head comes with pre-assembled valves).
15. Reconnect tubing or piping and reinstall the pump.
16. Check for leaks around newly installed fittings.

Suction and Discharge Valve Instruction

Always adhere to local, state and national codes. Also be sure to use appropriate Personal protective equipment, such as gloves and eye protection to keep you safe in the event of contact with any chemical.

1. Flush pump head and valve assemblies out by running water or other suitable neutralizing solution through pump. Wash outside of pump down if chemical dripped on pump.
2. Release system pressure
3. Unscrew Suction and Discharge valve cartridges from head and discard. Also remove O-Rings down inside pump head. Degassing valve models will have the degassing valve to remove also.
4. Install Suction and Discharge valves (Confirm O-Rings are attached to the valves) with stamped letters reading from top to bottom, and the arrow pointing in the direction of flow. (Degas valve is stamped DV1 and screws into top of head, see diagram to the left.) Hand-tighten only, do not use wrenches or pliers.
5. Reconnect tubing or piping and reinstall the pump.
6. Check for leaks around newly installed fittings.

Also available for your Electronic Metering Pump is the Pulsafeeder **PEPkit**. The **Pump Enhancement Parts kit** includes all the wet end components to keep your pump performing at its optimum at a reduced cost of purchasing these items individually.

PEPkit

PEPkit CONTENTS	QTY
INJECTION VALVE ASSEMBLY	1
BLEED VALVE ASSEMBLY (Not w/ Degas Models)	1
DEGASSING VALVE ASSEMBLY (Degas Models)	1
DISCHARGE VALVE ASSEMBLY	1
PUMP HEAD	1
PUMP HEAD SCREWS & WASHERS *	4
SUCTION VALVE ASSEMBLY	1
FOOT VALVE / STRAINER ASSEMBLY	1
DIAPHRAGM	1
DEFLECTION PLATE	1
SHIMS	2
SECONDARY SEAL	1
SUCTION TUBING	1 Reg
DISCHARGE TUBING	1 Reg./1 Hi Press
RETURN TUBING	1 Reg./1 Hi Press

*H8 MODELS HAVE 6 - SCREWS/WASHERS